



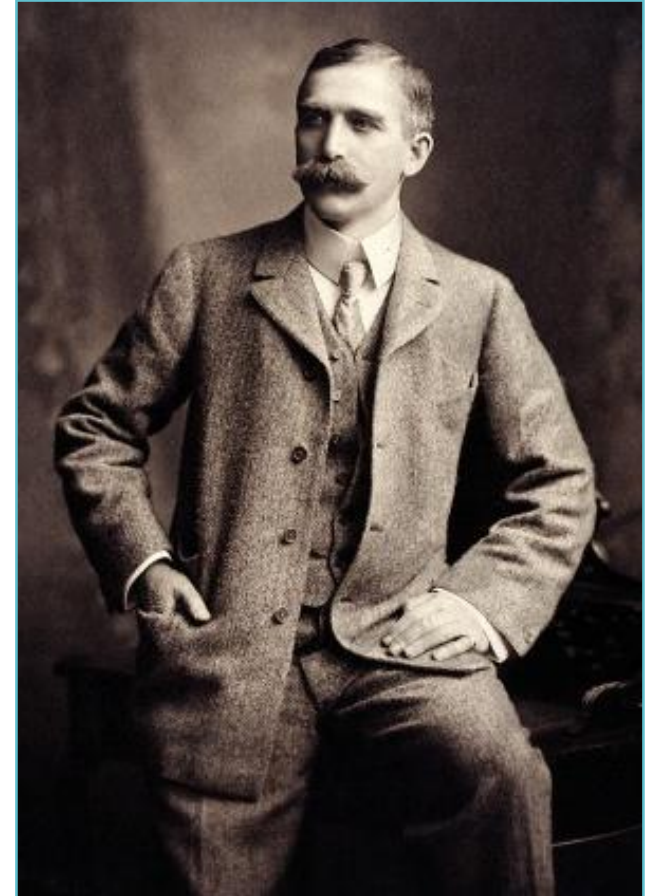
Funding opportunities at Wellcome

University of Edinburgh
25th September 2018

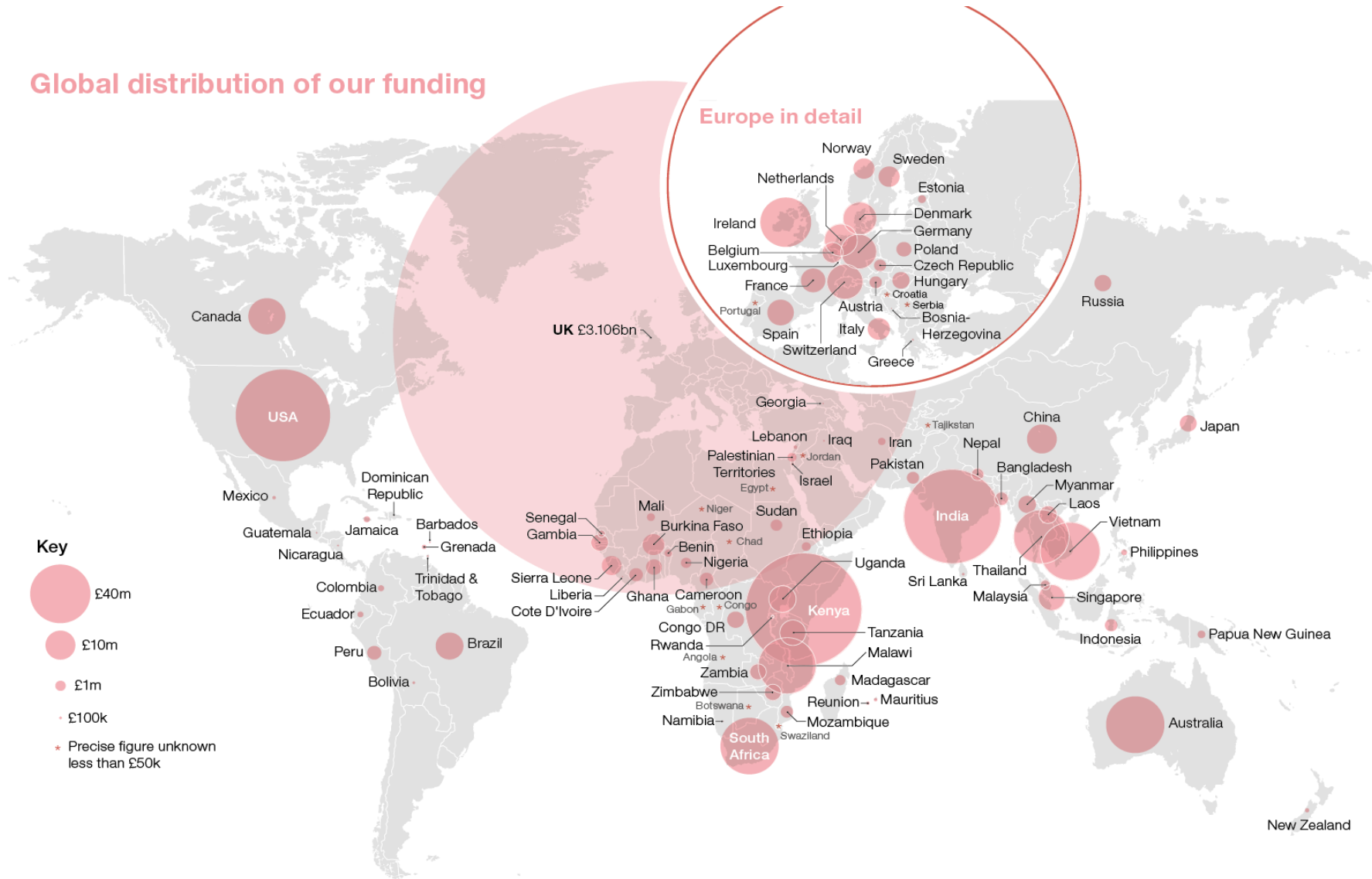
Dr Divya Shah, Senior Portfolio Developer
Infection and Immuno-biology

Who we are

- We were established in 1936 under the will of Sir Henry Wellcome
- Our Endowment is currently worth ~ £23bn
- Investments in public and private equities, hedge funds, property and cash
- We are independent and global
- Our interests range from science to the history of medicine to public engagement



Our current active grant portfolio



Wellcome

Current

- Funding is response mode and competitive
- Last year we received requests totalling £~5.1billion
- We funded £1.1billion
- We fund mainly UK and Ireland and LMICs

Future

Response-mode and Strategic Initiatives



Response mode funding

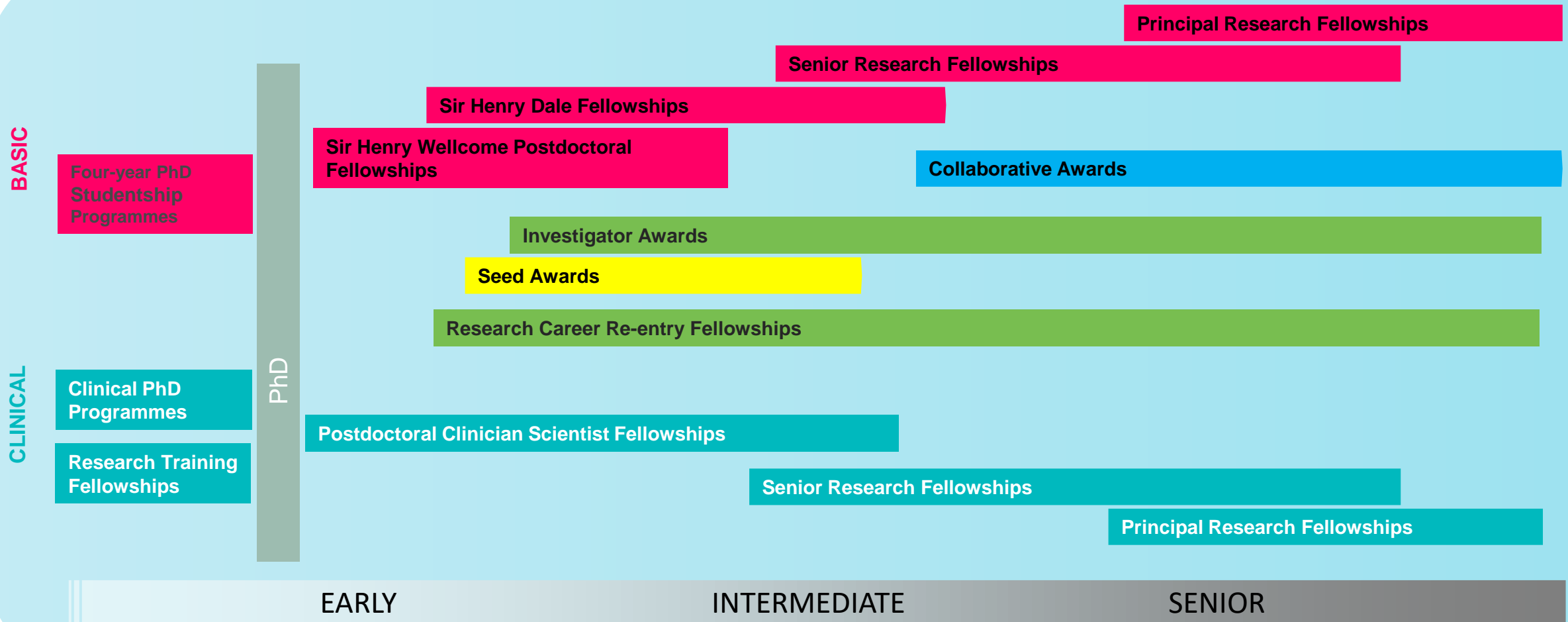
Strategic Funding

To transform fields, fill gaps or priority need, or initiate major new developments
e.g. Vaccines and Drug Resistant Infections

Response Mode Funding

People	support for individuals through Fellowships & Investigator Awards
Teams	support for research groups through Collaborative Awards
Seeds	support for the development of ideas for future applications
Places	support for cross-disciplinary and synergistic working
Resources	enabling support that underpins research

Support for Researchers



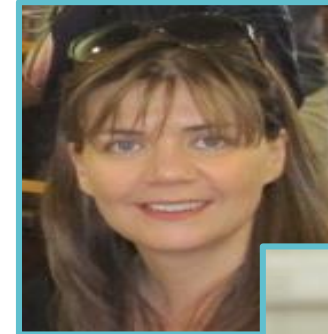
Fellowships

- To attract, train and retain the best researchers (including basic and clinical research)
- Schemes designed for each stage of the research career
- Salary of the Fellow provided
- Plus research costs – including the salaries of the Fellow's research team, consumables, equipment and other expenses
- Award size and duration varies, depending on the career stage and scheme



Senior Research Fellowships

- For established researchers leading your own independent research programme
- Significant post-doctoral experience and an excellent track record
- Up to 7 years support (average 5 years) with potential to renew in partnership with the host institution for a further 5 years
- Full application
- Applications considered three times a year
- **Next preliminary deadline: 12th November 2018**



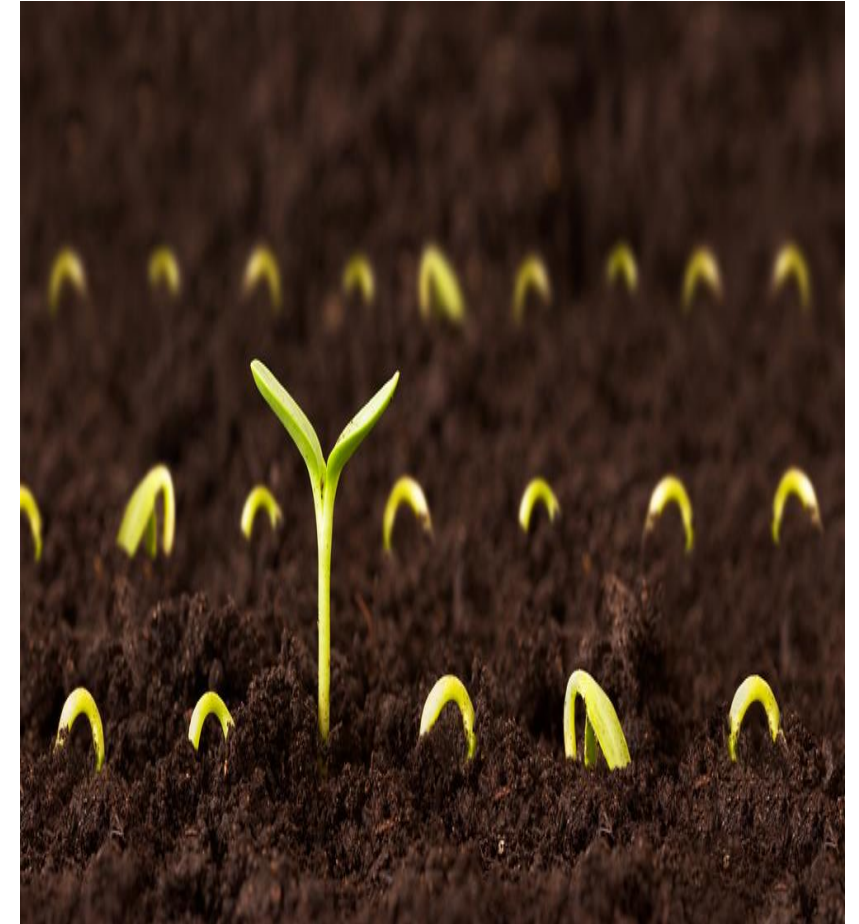
Principle Research Fellowship

- Most prestigious of our personal awards and provides long-term support for researchers of international standing, with established track record in research at the highest level
- Particularly suitable to those who want to work in UK or ROI but are currently based in a different country or currently hold a Senior Research Fellowship
- 5 or 7 years with renewable opportunity
- **Invitation only - If interested contact Wellcome 12 months in advance**



Seed Funding

- Enable researchers to develop a novel idea
- To generate resources, tools or preliminary data leading to a larger research application
- You must have a salaried position e.g. lectureship
- Up to £100,000 over 2 years
- Not for researchers with a current personal award or other substantive funding
- Considered three times per year
- **Next deadline: 2nd October 2018**



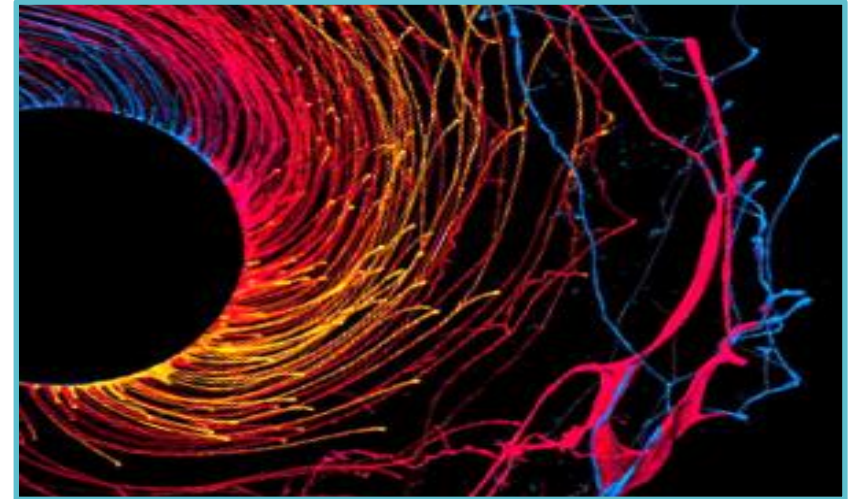
Investigator Award

- Researchers and clinicians with established academic posts and long term vision for their research
- Single or joint awards
- Applicants considered according to their career stage
- Up to 7 years support (average 5 years)
- Research question drives the value and duration of award
- Typically £1-2 M
- Applications considered three times a year
- **Next deadline: 12th November 2018**



Collaborative Award

- Collaborative research projects to solve a problem that can only be achieved by teams working together
- Single or cross-discipline
- For three or more individuals
- Question/Problem driven
- Lead PI has to be UK/ROI/LMIC
- Up to £4 million over 5 years
- Applications considered three times a year
- **Next preliminary deadline: 19th November 2018**
- **Talk to the office before proceeding**



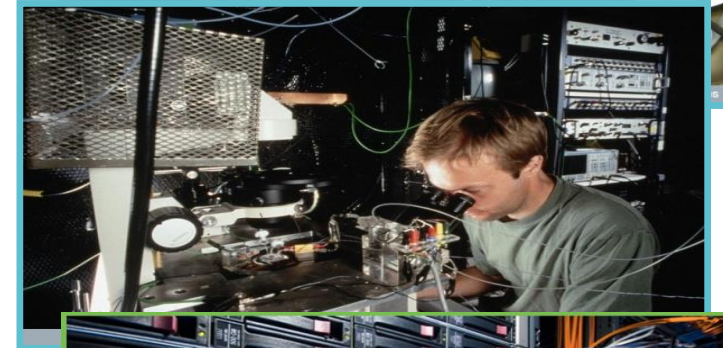
Biomedical Resource Grant/ Technology Development Grant

- To establish/maintain a resource/technology for the benefit of the wider science community
- May include cohorts, databases, shared resources
- Up to £1.5M over 5 years
- Annual competition
- **Next preliminary deadline: January 2019**



Multi-user Equipment Grant

- Support for multi-user items of equipment; equipment required to create a central resource
- £75K - £1M over 5 years
- Purchase, essential running and maintenance costs of equipment
- Salaries for staff necessary to run and/or manage the apparatus
- Contributions from the host institution expected
- Considered once a year
- **Next preliminary deadline: January 2019**

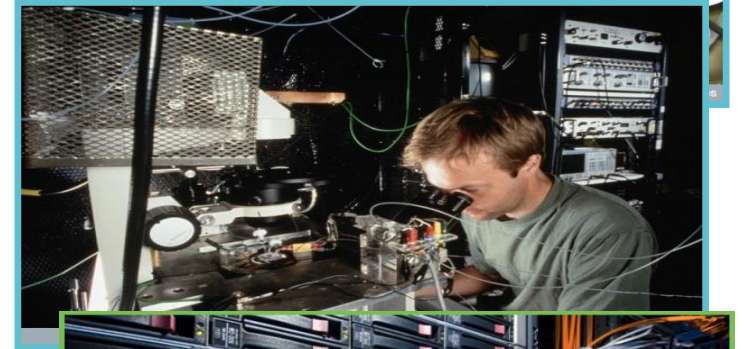


Longitudinal Population Study Grants

- Support for researchers who want to establish, maintain or enhance LPS for the benefit of the wider scientific community
- Up to £5mil for core support, or £1.5mil for enhancing value (e.g. new methodology) for up to 5 years
- Purchase, essential running and maintenance costs of equipment
- Salaries for staff necessary to develop or manage the LPS
- Considered once a year
- **Next preliminary deadline: 7th November 2018**

Places

- Sanger Institute
- Major Overseas Programmes for global health: Kenya, Malawi, South Africa, Thailand, Viet Nam.
- 14 Centres (UK and South Africa)
- 32 PhD Programmes – new competition
- Institutional Strategic Support Fund



Innovations

- Moved from response-mode to programmatic funding
- Impact investments to help researchers develop treatments, products, by:
- Building impact from the current portfolio
- Supporting a broader community and careers
- Working in partnership with flagships

Our Innovator Awards are open for applications

🕒 News / Published: 23 February 2017

Today we're launching our [Innovator Awards](#). This new scheme is to help researchers develop healthcare innovations that will have a significant impact on improving human health.

The Innovator Awards are:

- open to individuals and teams from not-for-profit and commercial organisations
- up to £500,000 each
- open to applicants anywhere in the world.

Wellcome's Director of Innovations Stephen Caddick announced our new [Innovation for Impact strategy](#) earlier this month.

Initially, the Innovator Awards will focus on translational research in:

- mental health
- neurological disorders
- neglected tropical diseases.

We'll consider work in any discipline on any type of technology.

The [scheme page](#) has full details about eligibility and how to apply. There are no application deadlines - you can apply online at any time.

Strategic Initiatives

- Driven by Wellcome with external input
- The first three scientific initiatives are:
 - Vaccines
 - Our planet, our health
 - Drug Resistant Infections (AMR)
- Specific stand-alone teams. Largely NOT response-mode
- To deliver very specific outputs and outcomes

Grantsmanship

- The art of 'grantsmanship' will not turn mediocre science into a fundable grant proposal
- But poor 'grantsmanship' will, and often does, turn very good science into an unfundable grant proposal
- Good writing will not save bad ideas, but bad writing can kill good ones

(Jacob Kraicer 'The Art of Grantsmanship' 1997)

Assessment Processes – Key Stages



- ✓ Assess eligibility and suitability for fellowship
- ✓ Publications – primary research papers
- ✓ Current funding or awards

Note: Seeds = Application only (no interview, only triage)

Assessment Criteria

Person

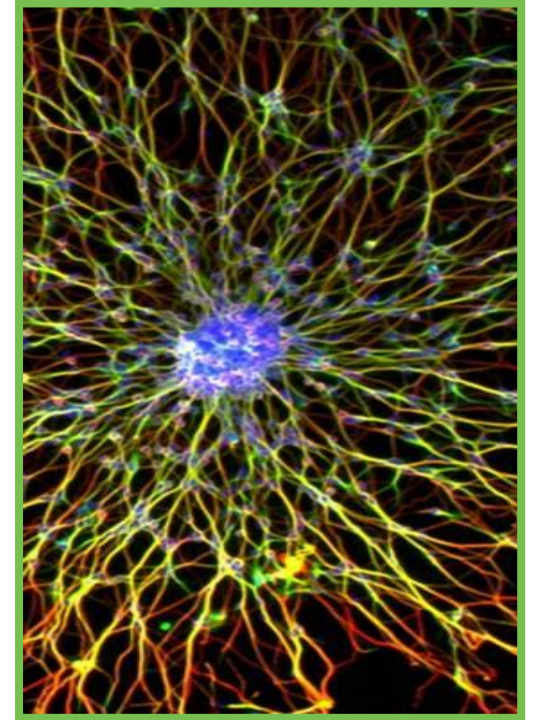
- Meets eligibility criteria
- Track record – publications, talks, prizes, supervisions, grants
- Knowledge
- Career development and long term aspirations
- Independence
- Ownership of the project



Assessment Criteria

Project

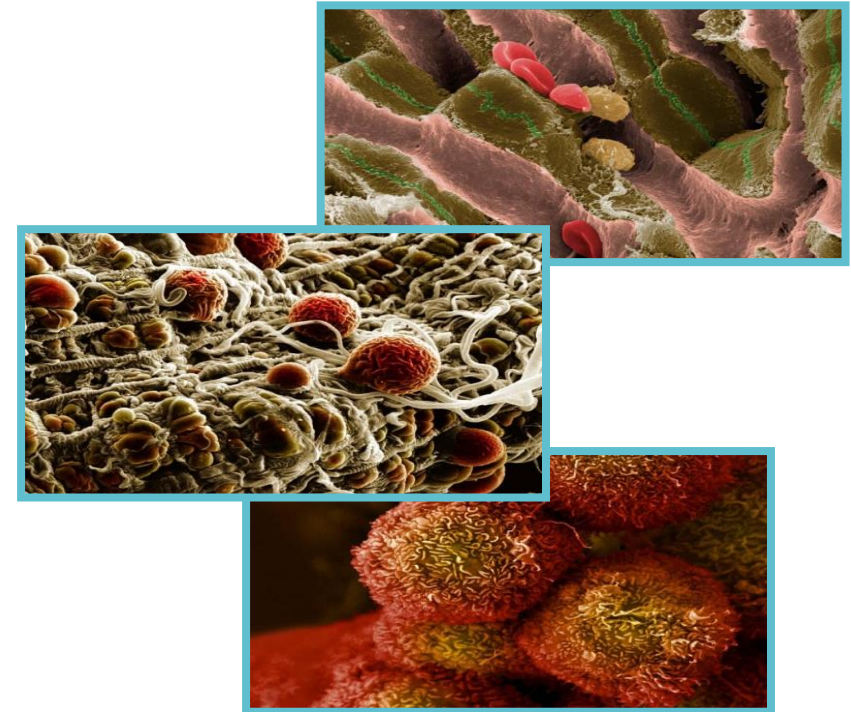
- Clear research question – quality and importance
- Sufficient information provided
 - Feasibility
 - Contingency plans
 - Preliminary data, power calculations
- Resources appropriate
- Enables independence
- Clearly presented – relevance of background information
- Strengths and weaknesses of application



Assessment Criteria

Place

- The quality and suitability of the research environments
- Appropriate expertise/collaboration
- The candidate's choice of research sponsors
- Strong institutional support
 - Access to space and facilities
 - Contribution to equipment costs
 - Provision of students



Before starting your application

- Read the application form and guidance notes carefully
- Think about the questions to address and who you may need to contact before you can answer some of them
- Discuss ideas with colleagues in the relevant fields
- Check deadlines to avoid rushed applications & allow time for the application to be processed by the research office
- Queries? Concerns? Contact us for advice

What makes a strong application?

- A strong track record appropriate to the amount of research experience
- Evidence that the candidate can do what is proposed and deal with any setbacks as they arise
- A clear research vision or goal
- Sufficient information for reviewers to understand:
 - What is proposed
 - What approaches will be taken
 - Whether it is likely to work
- Access to required collaborators, resources and technology
- Highlight institutional support
- Use all sections of the form

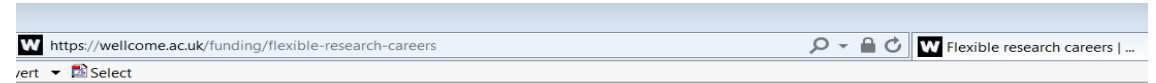
Avoid common mistakes

- Have you considered the following?
 - Be realistic
 - Submit relevant evidence
 - Be analytical and critical
 - Do not depend on your track record alone
 - Dedicate sufficient time to the project
 - Don't assume reviewers will know what you have done – even those in your field

Proof read the application and ask others to read it critically before submission – you will need to give them plenty of time to do this well!

Support and flexibility

- Generous maternity/ paternity/ adoption/sick leave supplements and extensions
- Flexible (part-time) working and career breaks
- Each case will be considered individually



Flexible research careers

We understand that different people choose different career paths, so we want to provide flexible research career opportunities.

We constantly review the funding and career support we offer our researchers.

See [an overview of our personal support schemes \(PDF 44KB\)](#).

Re-entering a research career

Our [Research Career Re-entry Fellowships](#) offer postdoctoral research scientists the opportunity to re-establish their scientific career after a continuous break from research of at least two years.

The Wellcome Sanger Institute's [Janet Thornton Fellowships](#) help scientists to return to research after a career break of a year or more.

UK universities that receive one of our [Institutional Strategic Support Fund awards](#) can use part of the award to co-fund [Daphne Jackson Trust Fellowships](#).

Maternity, paternity, adoption or sick leave

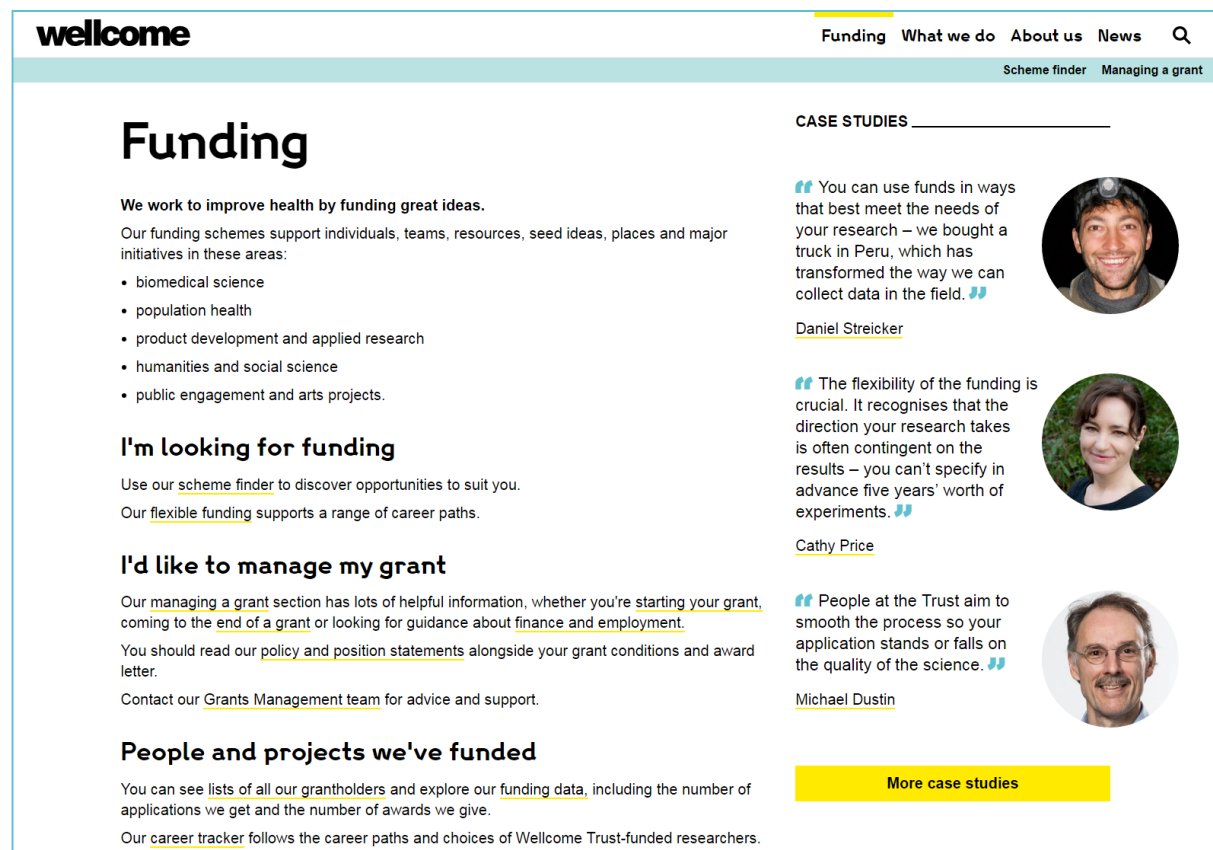
We offer [maternity, paternity, adoption or sick leave](#) to our researchers.

Flexible and part-time working

If in doubt, get in touch...

We're keen to talk to you about your ideas in person, by phone or email.

Extensive information about our funding is available on our website.



The screenshot shows the Wellcome website's 'Funding' page. The header includes the Wellcome logo and navigation links: Funding, What we do, About us, News, and a search icon. Below the header, there are links for 'Scheme finder' and 'Managing a grant'. The main content area is titled 'Funding' and includes a sub-header 'We work to improve health by funding great ideas.' followed by a paragraph about funding schemes and a list of areas: biomedical science, population health, product development and applied research, humanities and social science, and public engagement and arts projects. There are three sections: 'I'm looking for funding', 'I'd like to manage my grant', and 'People and projects we've funded'. The 'CASE STUDIES' section on the right features three quotes from researchers: Daniel Streicker, Cathy Price, and Michael Dustin, each with a circular portrait photo. A yellow button labeled 'More case studies' is at the bottom of the case studies section.

wellcome

Funding What we do About us News

Scheme finder Managing a grant

Funding

We work to improve health by funding great ideas.

Our funding schemes support individuals, teams, resources, seed ideas, places and major initiatives in these areas:

- biomedical science
- population health
- product development and applied research
- humanities and social science
- public engagement and arts projects.

I'm looking for funding

Use our [scheme finder](#) to discover opportunities to suit you.

Our [flexible funding](#) supports a range of career paths.

I'd like to manage my grant

Our managing a grant section has lots of helpful information, whether you're starting your [grant](#), coming to the [end of a grant](#) or looking for guidance about [finance and employment](#).

You should read our [policy and position statements](#) alongside your grant conditions and award letter.

Contact our [Grants Management team](#) for advice and support.

People and projects we've funded

You can see [lists of all our grantholders](#) and explore our [funding data](#), including the number of applications we get and the number of awards we give.

Our [career tracker](#) follows the career paths and choices of Wellcome Trust-funded researchers.

CASE STUDIES

“ You can use funds in ways that best meet the needs of your research – we bought a truck in Peru, which has transformed the way we can collect data in the field. ”

[Daniel Streicker](#)

“ The flexibility of the funding is crucial. It recognises that the direction your research takes is often contingent on the results – you can't specify in advance five years' worth of experiments. ”

[Cathy Price](#)

“ People at the Trust aim to smooth the process so your application stands or falls on the quality of the science. ”

[Michael Dustin](#)

[More case studies](#)

<https://wellcome.ac.uk/funding>

grantenquiries@wellcome.ac.uk



Thank You

Divya Shah – d.shah@wellcome.ac.uk

[@wellcometrust](#)